

Muddy's Web Site

Passionate About Subaru's



tech stuff

Model Year

This is to help you find out what MY- Model Year your Imported car is, also with Model codes and power outputs.

Subaru Stuff
Home
Latest Subaru News
Events
Owners Cars Gallery
Insurance
Servicing
Web Links
My Car
About this Site

Photo Gallery
Gallery 1
Gallery 2
Gallery 3
Gallery 4
Gallery 5
Gallery 6
Gallery 7

Technical Stuff
DIY Stuff
Tech Stuff

Funstuff
Fun page

Year Code	Manufactured	Applied Model Code	Power Output PS	Model
A	Nov.92-Sep.93 MY93	GC8A48D	240	WRX 4 door
		GC8A47D	240	WRX RA 4 door
B	Oct.93-Aug.94 MY94	GC8B48D	240	WRX 4 door
		GC8B47D	240	WRX RA 4 door
		GC8B48D	250	WRX STi 4 door
		GF8B58D	220	WRX 5 door
		GF8B58D	220	WRX SA 5 door
		GF8B58D	250	WRX STi 5 door

C1	Sep.94-Aug.95 MY95	GC8C48D	260	WRX 4 door
		GC8C47D	260	WRX RA 4 door
		GC8C47D	275	WRX RA STi 4 door
		GF8C58D	220	WRX 4 door
C2	Sep.95-Aug.96 MY96	GC8C48D	260	WRX 4 door
		GC8C47D	260	WRX RA 4 door
		GC8C4ED	275	WRX STi2 4 door
		GC8C4ED	275	WRX STi2 555 4 door
		GC8C4DD	275	WRX RA STi
		GC8C4DD	275	WRX RA STi2 V-Limited
		GF8C58D	220	WRX 5 door
		GF8C58D	260	WRX STi2 5 door
		GF8C58D	260	WRX STi2 555 5 door
		GF8C58P	220	WRX 5 door AT
D	Sep.96-Aug.97 MY97	GC8D2DD	300	WRX STi R 2 door
		GC8D48D	280	WRX 4 door
		GC8D47D	280	WRX RA 4 door
		GC8D4ED	300	WRX STi3 4 door
		GC8D4ED	300	WRX STi3 V-Limited 4 door
		GC8D4DD	300	WRX RA STi3
		GF8D58D	240	WRX 5 door
		GF8D5ED	300	WRX STi3 5 door
				GF8D5ED

		GF8D58P	240	WRX 5 door AT
E	Sep.97-Aug.98 MY98	GC8E2DD	300	WRX R STi4 2 door
		GC8E2DD	300	WRX R STi4 V-Limited 2 door
		GC8E27D	300	WRX RA V-Limited 2 door
		GC8E48D	280	WRX 4 door
		GC8E47D	280	WRX RA 4 door
		GC8E4ED	300	WRX STi4 4 door
		GC8E4DD	300	WRX RA STi4 4 door
		GC8E4DD	300	WRX RA STi4 4 door V-Limited
		GF8E58D	280	WRX 5 door
		GF8E5ED	300	WRX STi4 5 door
		GF8E58P	240	WRX 5 door AT
F	Sep.98-Aug.99 MY99	GC8F2DD	300	WRX R STi5 2 door
		GC8F2DD	300	WRX R STi5 V-Limited 2 door
		GC8F27D	300	WRX RA V-Limited 2 door
		GC8F48D	280	WRX 4 door
		GC8F47D	280	WRX RA 4 door
		GC8F4ED	300	WRX STi4 4 door
		GC8F4DD	300	WRX RA STi5 4 door
		GC8F4DD	300	WRX RA STi5 4 door V-Limited
		GF8F58D	280	WRX 5 door
		GF8F5ED	300	WRX STi5 5 door
		GF8F58P	240	WRX 5 door AT
G	Sep.99-Aug.00 MY00	GC8G2DD	300	WRX R STi6 2 door
		GC8G2DD	300	WRX R STi6 V-Limited 2 door
		GC8G27D	300	WRX RA V-Limited 2 door
		GC8G48D	280	WRX 4 door
		GC8G47D	280	WRX RA 4 door
		GC8G4ED	300	WRX STi6 4 door
		GC8G4DD	300	WRX RA STi6 4 door
		GC8G4DD	300	WRX RA STi6 4 door V-Limited
		GF8G58D	240	WRX 5 door
		GF8G5ED	300	WRX STi6 5 door
		GF8G58P	240	WRX 5 door AT

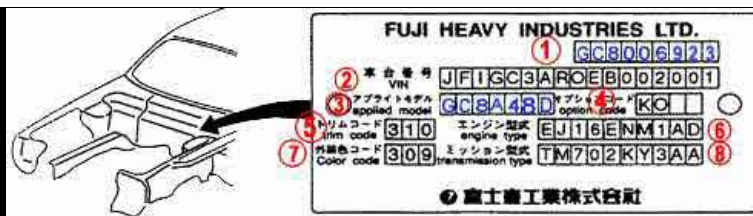
Here is a break down of the Applied Model Code as seen on your Vehicle Identification Plate found inside your engine bay.

1.	Model Code:	G=Impreza S=Forester B=Legacy etc.
2.	Body Type:	F=Wagon C=Sedan
3.	Engine Type:	8=2.0L Turbo
4.	Year Code:	A=MY93 , B=MY94 , C=MY95&96 , D=MY97 , E=MY98 , F=MY99 , G=MY00.
5.	Number of Doors:	2=2 door 4=4 door , 5=5 door.
6.	Model Type:	8=WRX , 7=RA type , E=STi , D=STi Type R & RA.
7.	Transmission:	D=5 Speed Manual , P=4 Speed Automatic.

So for an example we can use this Applied Number **GC8A48D** and from the table above we can find out exactly what model the Impreza is.

G = Impreza, **C** = Sedan , **8** = 2.0L Turbo, **A** = MY93, **4** = 4 Door, **8** =WRX,
D = 5 Speed

[Vehicle Identification Plate](#)



1. The top number is designated to the exact date that the car was built.
2. Vehicle Identification Number.
3. Applied Model - Indicates exactly what car you have, and can be deciphered by using the key above.
4. Option code, denotes what Options that were taken when the car was production.
5. Trim Code, this indicates type and colour of cloth and interior styling.
6. Engine Type, this indicates the engine number and what engine it is i.e. EJ20.
7. Colour Code, as it say's the specific paint code for the colour of your car.
8. Transmission Type, indicates the gearbox/transmission number and what type of gearbox is fitted.